



ADVANCED DENTAL  
EDUCATION ATHENS  
PERIO-PROSTHETIC EXCELLENCE


# THE 10 STEPS PROTOCOL

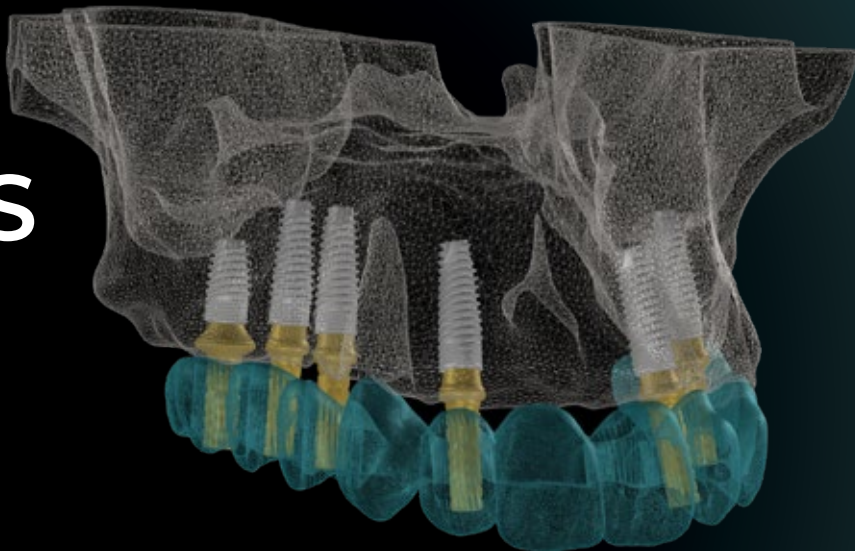
for full arch immediate  
implant rehabilitation

All On X Course

**JUNE 11 - 13, 2026**

For dentists and dental technicians

 ADEA Training Center, Athens



by Emil Bobev (Dental Technician)  
& Dr. Stavros Pelekanos

Teamwork  
is a way that  
allows common  
people to achieve  
uncommon results.

# Contents

DAY 1 ————— pg. 04

DAY 2 ————— pg. 05

DAY 3 ————— pg. 06



## HOURS

# DAY 1

08:40 - 09:00

|

Registration and brief Introduction

09:00 - 10:30

|

### INTRODUCTION OF THE 10 STEPS

**STEP 1. DATA ACQUISITION** (IOS, radiographs, pictures, videos, motion, face scan)

Stavros Pelekanos | Emil Bobev

10:30 - 11:00

|

Coffee and chat

11:00 - 12:30

|

### STEP 2. 2D SMILE DESIGN

face down protocol–incisal edge position, incisal curve, papilla position, tooth proportions, the 'YES' video (AI) – **SMILECLOUD**

### STEP 3. MERGING FILES AND SEGMENTATION

(upper STL, lower STL, CBCT, face, motion-digital avatar) - decision for CR, VDO,

DIAGNOSIS – **SMILECLOUD, RELU**

Stavros Pelekanos | Emil Bobev

12:30 - 13:30

|

Lunch break

13:30 - 15:00

|

### STEP 4. CONVERSION FROM 2D INTO 3D DESIGN

tissue excess or lack of tissues, decision between FP1, FP2 and FP3 - **SMILECLOUD**

Stavros Pelekanos | Emil Bobev | Eleana Milioni

15:00 - 15:30

|

Brain refresh, coffee and chat

15:30 - 17:00

|

### STEP 5. VEX MODEL

(dual purpose model for evaluation of bone amount supporting the implants and soft tissue emergence of components and pontic profile for FP1 and FP2 cases) - **MESH MIXER, BLUE SKY BIO, EXOCAD etc**

Stavros Pelekanos | Emil Bobev

## HOURS

# DAY 2

08:40 - 09:00

|

Coffee and chat

09:00 - 10:30

|

### STEP 6. 3D FINAL DESIGN

in function, pontics-transmucosal contouring – remodeling prediction - **CAD-SOFTWARE (3SHAPE or EXOCAD)**

Stavros Pelekanos | Emil Bobev | Vaso Rizou

10:30 - 11:00

|

Coffee and chat

11:00 -12:30

|

### STEP 7. IMPLANT POSITION PLANNING / COMPONENT SELECTION.

Matching IOS AND CBCT guide pins - **IMPLANT PLANNING SOFTWARE (SMOP, MSoft, IMPLANT STUDIO, CoDX etc.)**

Emil Bobev | Tanya Spyropoulou

12:30 - 13:30

|

Lunch break

13:30 - 15:00

|

### STEP 8. PROVISIONAL PROSTHESIS DESIGN AND FINAL CHECK

Opening holes, palatal reinforcement and final check of the relationship between holes, components pontics and bone - **CAD-SOFTWARE, SMILECLOUD, IMPLANT PLANNING SOFTWARE**

Stavros Pelekanos | Emil Bobev | Vaso Rizou | Tanya Spyropoulou

15:00 - 15:30

|

Brain refresh, coffee and chat

15:30 - 17:00

|

### STEP 9. VIRTUAL GUIDE DESIGN,

sequential or stackable, with or without prosthetic guide, fixation pins -**IMPLANT PLANNING SOFTWARE (Msoft, IMPLANT STUDIO, CoDX, SMOP or SMILECLOUD)**

Stavros Pelekanos | Emil Bobev | Tanya Spyropoulou

### STEP 10. FABRICATION OF FINAL DESIGN AND GUIDES - ANY MILLING OR PRINTING MACHINE

(at the evening or overnight)

## HOURS

# DAY 3

08:40 - 09:00

|

Coffee and chat

09:00 - 12:30

|

**LIVE SURGERY** full arch implant placement and immediate loading and provisionalization with M-guide, STAR concept and stackable guides  
**Stavros Pelekanos and team**

12:30 - 13:30

|

Lunch break

13:30 - 15:00

|

Final words – Q and A, and summary  
**Stavros Pelekanos | Emil Bobev**

SUPPORTED BY:





ADVANCED DENTAL  
EDUCATION ATHENS  
PERIO-PROSTHETIC EXCELLENCE

[www.adeacourses.com](http://www.adeacourses.com)

**A:** El. Venizelou 163B str., 176 72, Athens, Greece

**M:** +30 69 5165 3684

**E:** [info@adeacourses.com](mailto:info@adeacourses.com)